

Page 1

1.



3.

LINE NOTES

SPACE NOTES

A musical staff in bass clef is divided into two sections. The left section, labeled 'LINE NOTES', contains five whole notes on the lines: G (bottom line), B (second line), D (third line), F (fourth line), and A (fifth line). The right section, labeled 'SPACE NOTES', contains four whole notes in the spaces: A (bottom space), C (second space), E (third space), and G (top space).

G B D F A A C E G

Page 2

4.

G, A, B, F, D, A, G, B, F, D
B, G, D, A, F, D, F, G, A, B

5.

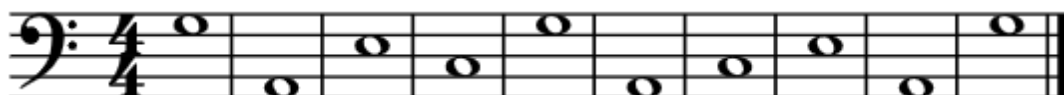
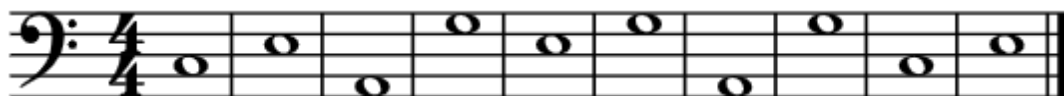
Page 3

6.

G, C, E, G, C, A, G, C, E, A
C, E A, G, A, E, C, G, A, E

Page 3

7.

Page 4

8.



9.

Page 5

10.

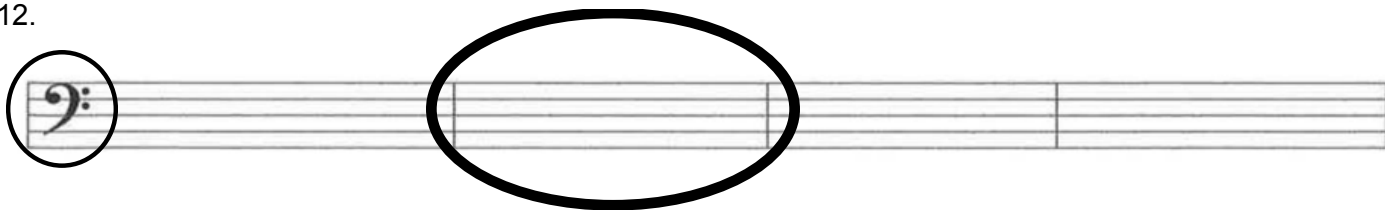
BAD, FEED, DAD, CAGE
 BADGE, EGG, FACE, GAGE

11.

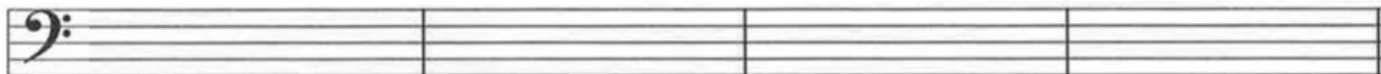


Page 6

12.

Page 6

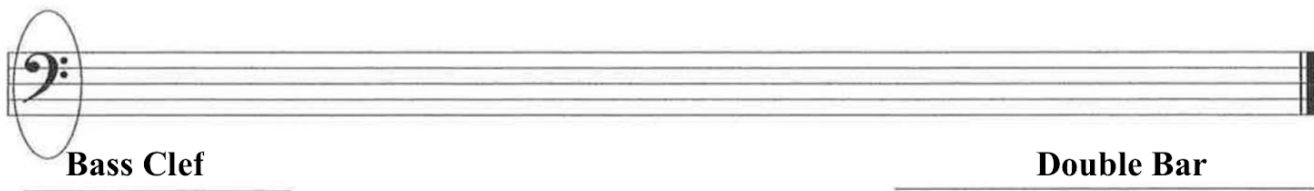
13.



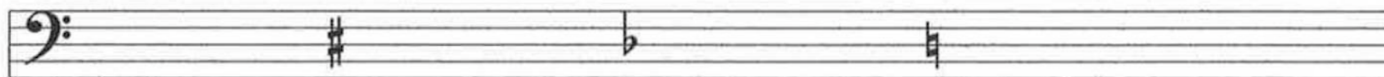
14.



15.

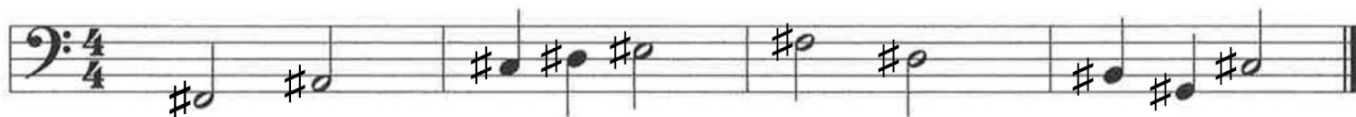
Bar LineRepeat SignsPage 7

1.

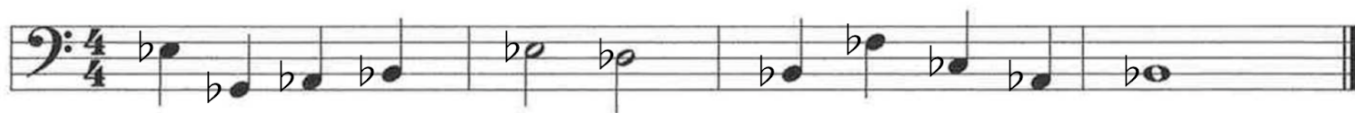


Page 8

2. Make sure that your # is on the same line or space as the note it's changing. The box in the # should be in line with the note head.



3. Make sure that your b is on the same line or space as the note it's changing. The body of the b should be in line with the note head.



4. Make sure that your natural sign (♮) is on the same line or space as the note it's changing. The box in the ♮ should be in line with the note head.

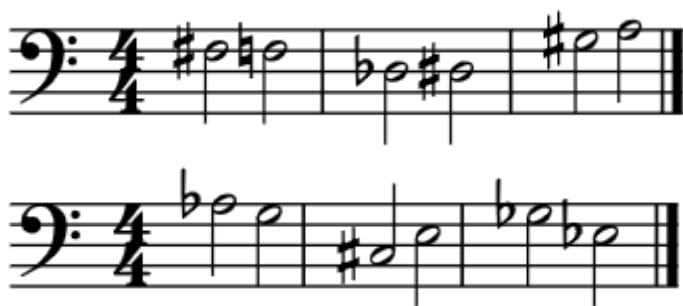
Page 9

5. For natural notes, writing the note with a natural sign or just the letter is acceptable. When a note doesn't have an accidental next to it, it is assumed to be natural. On this example all answers are given with the ♮.

C ♮, C♯, D ♮, D ♭, C ♮, B ♭, A ♮, B ♭, B ♮, C♯, C ♮, C ♮, A ♮, A ♭, G ♮

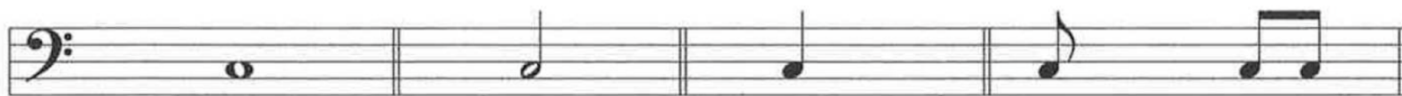
G ♮, G ♭, G ♮, B ♮, F ♮, F♯, G ♮, G♯, A ♮, A♯, B ♮, A♯, A ♭, G ♮, F ♮

6. For the natural notes, natural signs will only be placed on the notes that are canceling an accidental. Notes without accidentals will be assumed to be natural.



Page 10

1.



whole note

half note

quarter note

eighth note

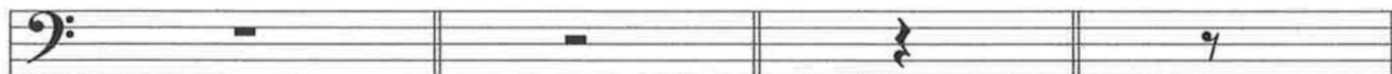
eighth notes

2.

WHOLE NOTE, DOTTED HALF NOTE, QUARTER REST, HALF NOTE, TWO EIGHTH NOTES

Page 11

3.



whole rest

half rest

quarter rest

eighth rest

4.

QUARTER REST, WHOLE REST, EIGHTH REST, HALF REST

Page 12

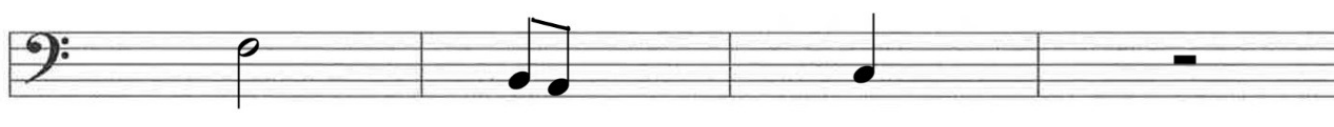
5.

HALF NOTE, WHOLE NOTE, QUARTER REST, QUARTER NOTE, WHOLE REST
 EIGHTH NOTE, TWO EIGHTH NOTES, DOTTED HALF NOTE, HALF REST, HALF NOTE
 QUARTER NOTE, EIGHTH REST, EIGHTH NOTE, QUARTER REST, DOTTED HALF NOTE

6.




one eighth note whole rest dotted half note quarter rest



half note two eighth notes quarter note half rest



eighth rest whole rest quarter rest quarter note



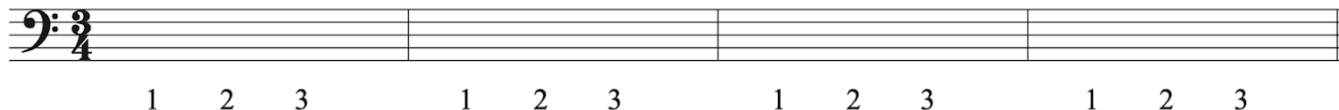
whole note dotted half note half rest one eighth note

Page 14

1. Write the counts under the measures below, starting with 1 at the beginning of each measure.



2. Write the counts under the measures below, starting with 1 at the beginning of each measure.



3. Write the counts under the measures below, starting with 1 at the beginning of each measure.

Page 15

4.
2, QUARTER NOTE

5.
3, QUARTER NOTE

6.
4, QUARTER NOTE

Page 17

7. (#6 in unedited book)

2	4	$\frac{1}{2}$ or .5	2	1	$\frac{1}{2}$ each or 1 if added	4	3
4	$\frac{1}{2}$ or .5	$\frac{1}{2}$ or .5	1	4	1	2	1
$\frac{1}{2}$ each or 1 if added	3	4	1	$\frac{1}{2}$ or .5	2	2	4
3	1	2	4	$\frac{1}{2}$ each or 1 if added	1	1	$\frac{1}{2}$ or .5

9. (#8 in unedited book)

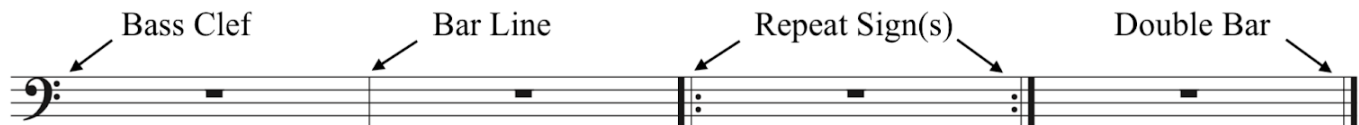


Page 20

10. (#9 in unedited book)

Page 21

1.



2. G#, E ♭ , F, C#, D, B ♭ , F#, E

Page 21

3.



4.



half note

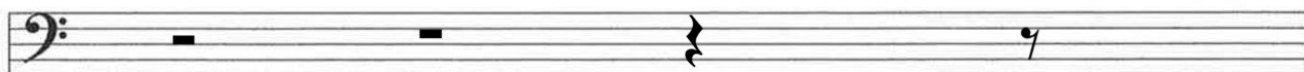
whole note

quarter note

one eighth note

two eighth notes

5.



half rest

whole rest

quarter rest

eighth rest

Page 22

6.



C# (half note)

Eb (quarter note)

B (whole note)

F# (eighth note)



G & A (eighth notes)

E (half note)

D (quarter note)

Db (whole note)

7.

whole note		whole rest	
half note		half rest	
quarter note		quarter rest	
eighth note		eighth rest	

Page 22

8.

$\underline{2} + \underline{2} + \underline{2} - \underline{2} = \boxed{4}$

$\underline{1} + \underline{1} + \underline{1} - \underline{2} = \boxed{1}$

$\underline{1} + \underline{1} + \underline{2} - \underline{2} = \boxed{2}$

Page 23

9.

B, C \sharp , D, C \sharp , C, D \flat , D \natural , E, E \flat , E \flat , D \flat , C, D, C
 G, G \flat , G \natural , F \sharp , G, F \sharp , E, E \flat , D, E

10.

3 = TOP = 3 beats

4 = BOTTOM = Quarter Note

C = TOP = 4 beats

= BOTTOM = Quarter Note

2 = TOP = 2 beats

4 = BOTTOM = Quarter Note

4 = TOP = 4 beats

4 = BOTTOM = Quarter Note

Page 24

11.

Exercise 11 consists of three staves of musical notation in bass clef. The first staff is in 4/4 time and contains 12 measures with notes and rests, accompanied by fingerings: 123, 4, 1, 23, 4, 12, 3, 4, 1, 23, 4. The second staff is in 3/4 time and contains 12 measures with notes and rests, accompanied by fingerings: 1, 2, 3, 1, 2, 3, 12, 3, 1, 23, 1, 2, 3, 1, 23. The third staff is in 2/4 time and contains 12 measures with notes and rests, accompanied by fingerings: 1, 2, 1, 2, 1, 2, 1, 2, 12, 1, 2.

12.

Exercise 12 consists of three staves of musical notation in bass clef. The first staff is in common time (C) and contains 8 measures with notes and rests. The second staff is in 2/4 time and contains 8 measures with notes and rests. The third staff is in 3/4 time and contains 8 measures with notes and rests.

Page 25

1. (#2 in unedited book)

Page 26

2.

Page 27

3.

W, W, H, H

W, H, W, H

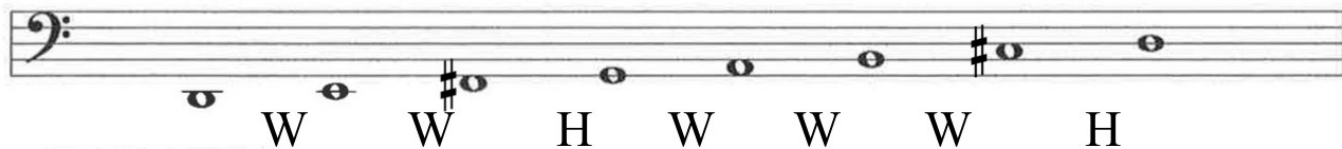
W, H, W, H

H, H, W, W

Page 29

1.

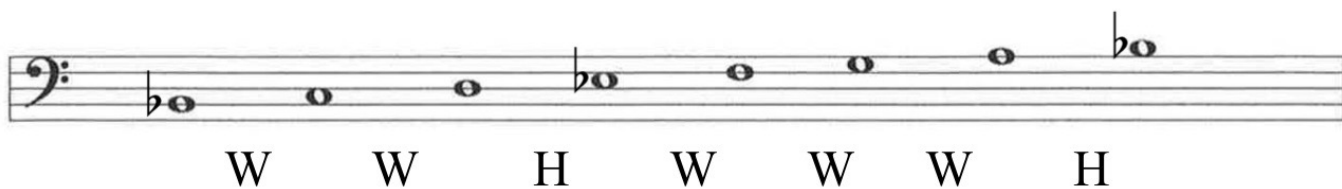
D Major Scale



F Major Scale

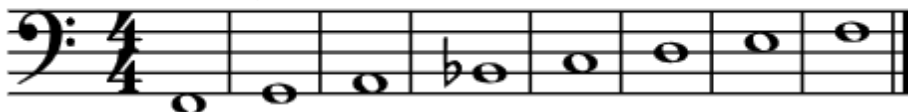
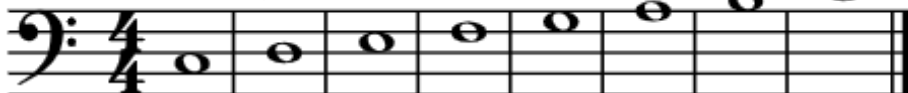
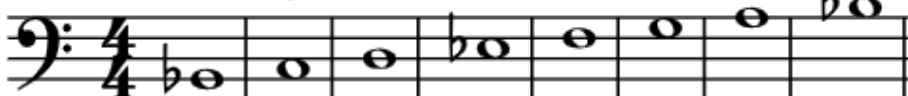


Bb Major Scale



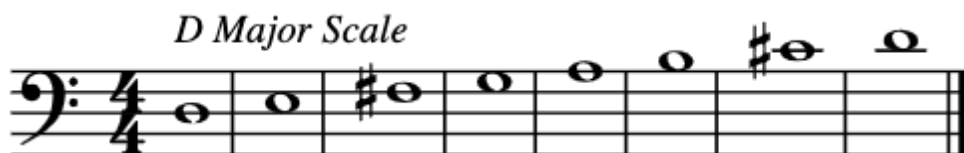
Page 30

2.

F Major Scale*C Major Scale**G Major Scale**Bb Major Scale*

Page 30

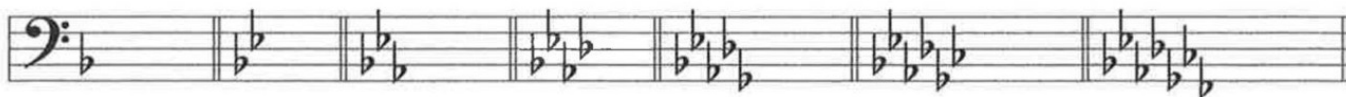
2. Continued

**Page 31**

1. F#, C#, G#, D#, A#, E#, B#



2. Bb, Eb, Ab, Db, Gb, Cb, Fb

**Page 33**

3. Last sharp is F#
Name of the key is GM

Last sharp is C#
Name of the key is DM

Last sharp is G#
Name of the key is AM

Last sharp is D#
Name of the key is EM

4. GM, CM, FM, DM

Page 34

5. Next-to-last flat is Bb
Name of the key is BbM

Next-to-last flat is Eb
Name of the key is EbM

Next-to-last flat is Ab
Name of the key is AbM

Next-to-last flat is Db
Name of the key is DbM

6. DM, FM, CM, BbM, GM

Page 35

7.



8.



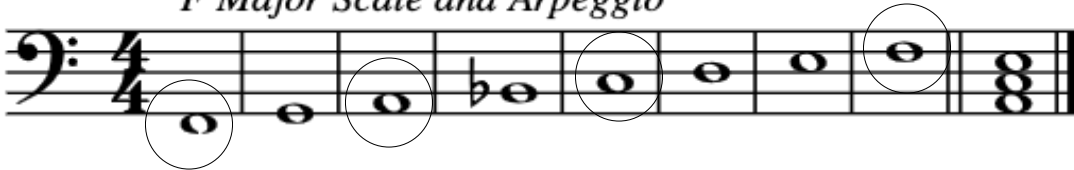
9. FM, DM, CM, GM, BbM

10.



Page 36

1.

F Major Scale and ArpeggioPage 37

2.

G Major Scale and Arpeggio

3.

D Major Scale and Arpeggio

4.

Bb Major Scale and Arpeggio

5.

C Major Scale and ArpeggioPage 38

6. GM, CM, DM, BbM

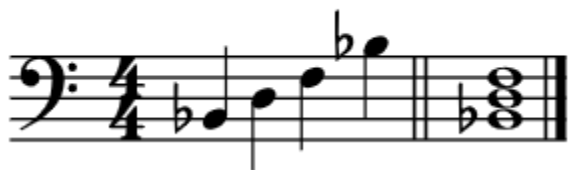
7. FM, BbM, GM, DM, CM

Page 38

8.

DM Arp and Triad

9.

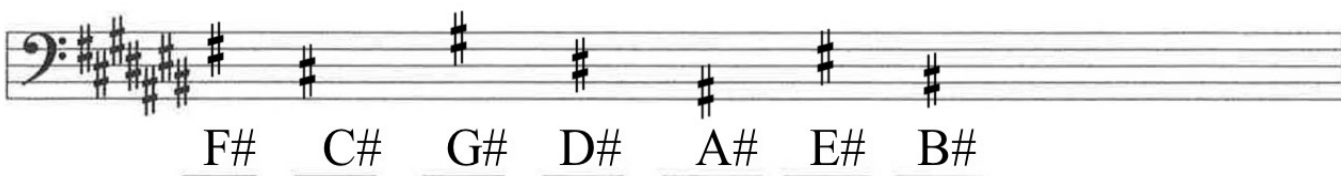
BbM Arp and TriadPage 39

1. H, W, W, W, W

2.



3.



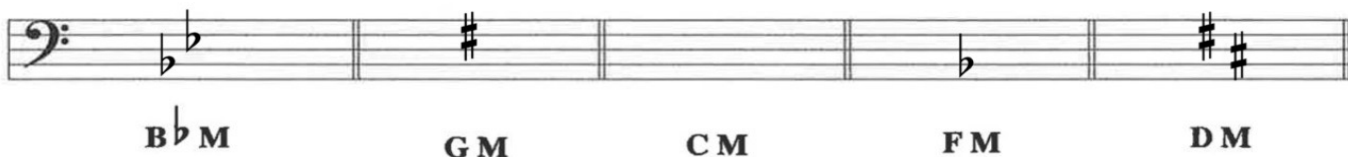
4.



Page 40

5. FM, DM, BbM, GM, CM

6.



7.

DM Scale & Tonic (I) Arpeggio

8. F Major Scale/ G Major Arpeggio

Page 42

1. Adagio/Slow Tempo

2. Allegro/Fast Tempo

3.

mp Medium Soft Mezzo Piano

f Loud Forte

mf Medium Loud Mezzo Forte

p Soft Piano

Page 44

4. Staccato, Slur, Tie, Fermata

Page 45

5. J, F, L, I, A, C, B, H, D, K, E, G

6. Fermata, staccato, tie, slur, fine

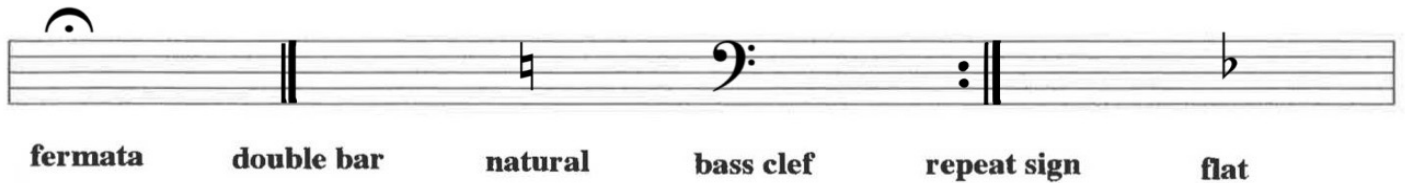
Page 46

Answers will vary by student instrument.

Flute, Oboe, Bassoon, Trombone, and Euphonium: C
 Clarinet, Trumpet, Tenor Saxophone, Baritone Horn: Bb
 Alto Saxophone, Baritone Saxophone: Eb
 French Horn: F

Page 47

1.



2. G, C#, F, Eb, B, D, E, Ab, F#, D

3.



4. FM, DM, CM, BbM, GM

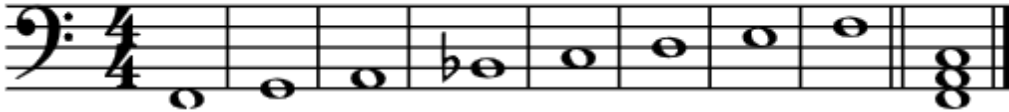
5.



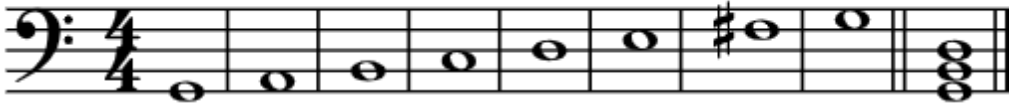
Page 48

6.

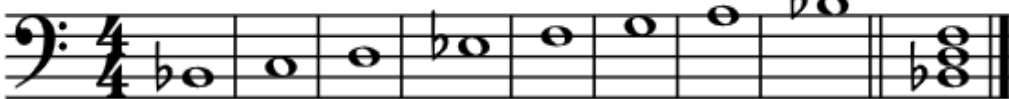
a.

FM Scale and Triad/Chord

b.

GM Scale and Triad/Chord

c.

BbM Scale and Triad/Chord

d. D Major Scale/ C Major Arpeggio

7. Answers will vary:

Flute, Oboe, Bassoon, Trombone, and Euphonium: C

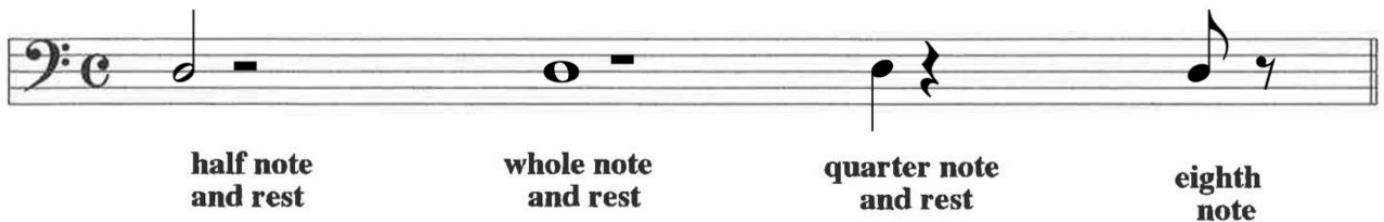
Clarinet, Trumpet, Tenor Saxophone, Baritone Horn: Bb

Alto Saxophone, Baritone Saxophone: Eb

French Horn: F

Page 48

8



9.

4, 1, 2, ½, 4, 1, ½, 2, 3

Page 49

10.



11.



12.

4, 2, 4, 3

Page 50

13.

H, W, H, H, W

14.

D, G, B, C, H, E, A, K, J, L, I, F

Page 51

15.

- A. F Major
- B. 4
- C. Fast tempo
- D. Forte, Play loudly
- E. 1
- F. Tie
- G. 2
- H. Slur
- I. Staccato, play the notes separated/detached.
- J. Fermata, hold